



# Hearing Amplifiers

# QUICK START GUIDE

# Table of Contents

<b>What's in the box?</b> .....	<b>3</b>
<b>Tour of the hearing amplifier</b> .....	<b>4</b>
<b>Tour of the charging cradle</b> .....	<b>6</b>
<b>Getting started</b> .....	<b>8</b>
1. Put domes on the hearing amplifiers.....	8
2. Put the hearing amplifiers on .....	9
3. Turn the hearing amplifiers on.....	10
4. Adjust the volume.....	10
<b>Charging the hearing amplifiers</b> .....	<b>12</b>
<b>Welcome to a new world of sounds!</b> .....	<b>13</b>
Tips for new users .....	14
<b>Troubleshooting</b> .....	<b>18</b>

# What's in the box?

1 Charging Cradle



1 Charging Cable



2 Hearing Amplifiers



1 Carry Case

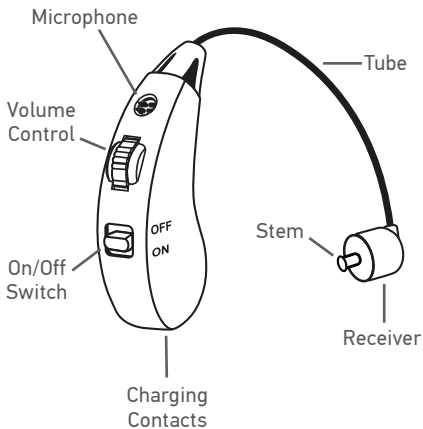


Domes in 4 Sizes



1 Cleaning Tool

# Tour of the hearing amplifier



The **Microphone** picks up sound in your surroundings, which the hearing amplifier processes and sends to your ear. You should try to keep it as unobstructed as possible.

The **Volume Control** wheel adjusts the amount of amplification applied to the sound. Rotate it up to increase the volume.

The **On / Off Switch** turns the hearing amplifier on (down position) or off (up position).

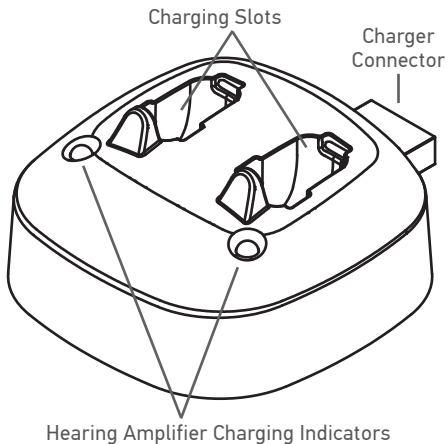
The **Charging Contacts** conduct the power to charge the hearing amplifiers when the hearing amplifiers are in the charging cradle.

The **Tube** carries the signal from the microphones to the receiver and dome. It can be rotated for use in the left or right ear.

The **Stem** attaches to one of the domes provided to fit snugly in your ear snugly in your ear.

The **Receiver** plays the processed sound into your ear.

# Tour of the charging cradle



The **Charging Slots** hold and charge the hearing amplifiers when the cradle is plugged in.

The **Charging Contacts** (not shown, inside the slots) conduct the power to charge the hearing amplifiers when the hearing amplifiers are in the charging cradle.

The **Hearing Amplifier Charging Indicators** illuminate red while the hearing amplifier on that side is charging and green when the hearing amplifier is fully charged.

The **Charger Connector** connects to the USB slot on the provided charging cable. Connect the other end of the charging cable to a USB power source to power the cradle (or plug the connector directly into a USB power source).

# Getting started

## 1. Put domes on the hearing amplifiers

This package contains four sizes of domes you can use.

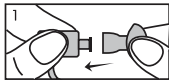
Start with a pair of medium-sized domes and try on the

hearing amplifier. You can try the larger or smaller domes if these don't work.

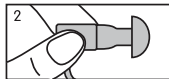


### To install the domes:

1. Hold the hearing amplifier's receiver (the piece at the end of the tube). Push the dome onto the receiver's stem until it feels securely in place.



2. Pull gently on the dome to make sure it's secure



3. Repeat for the other dome and hearing amplifier.



## 2. Put the hearing amplifiers on

1. Place the body of the hearing amplifier behind your ear.



2. Hold the tube where it meets the receiver.

Gently push the dome into your ear as shown.

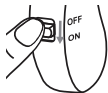


3. Repeat with the other hearing amplifier.

**If the domes seem too large or small, you can replace them with another size. Follow the directions on the page 11 for taking off the hearing amplifiers and domes. Then repeat the steps on page 8 to install different sized domes.**

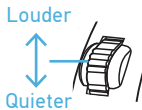
### 3. Turn the hearing amplifiers on

Put the ON/OFF switch on each hearing amplifier in the ON position (down) to turn it on.



### 4. Adjust the volume

The volume wheel is directly above the on/off switch. Slowly increase the volume until you notice the volume of your surroundings increase.



You'll need to experiment with different volume levels in different environments to see what's comfortable for you.

### **To take the hearing amplifiers off:**

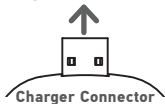
1. Put the ON/OFF button on the hearing amplifier in the OFF position.
2. Hold the tube close to the receiver and dome. Gently pull the dome out of your ear.
3. Remove the body of the hearing amplifier from behind your ear.

**To remove the dome:** Pull it off of the hearing amplifier's stem.

# Charging the hearing amplifiers

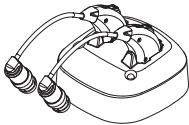
**To power the charging cradle:** Plug the charger connector into the USB slot on provided charging cable. Plug the other end of the charging cable into a USB power source, like a computer or adapter. You can also plug the charger connector directly into a USB power outlet.

Charging cable or USB power source



**To charge the hearing amplifiers:** Place them in the charging cradle.

**IMPORTANT:** Make sure the hearing amplifiers are turned off before you charge them.



The hearing amplifier charging indicators on the cradle illuminate red while that side's hearing amplifier is charging. They turn green when the hearing amplifier is charged.

# Welcome to a new world of sounds!

**It might take a while to get used to!** Your new AR Hearing Amplifiers let you experience sounds you might not have heard for a while: everyday sounds like clocks ticking, paper rustling or crinkling, nearby whispering or soft conversation, outdoor noises like wildlife or traffic, or nearby footsteps.

At first all these new sounds might be distracting, maybe even overwhelming.

**Give yourself time to get accustomed—it could take as long as 30 days (or more).** We recommend using your new hearing amplifiers an hour or two a day at first, in quiet settings if possible. Then gradually increase the amount of time and variety of situations you use your new hearing amplifiers in until they feel natural to you.

## Tips for New Users

- Your own voice will sound strange at first when you're wearing your hearing amplifiers. This is normal and normally goes away after a few weeks of use.
- Higher frequency sounds, like water running or paper crumpling, might seem loud at first. These higher frequencies are also essential to understanding speech clearly. Getting used to higher frequency sounds in your environment takes time and patience, but the trade-off is understanding speech more clearly. Most users find that after 3-4 weeks of regular use, the hearing amplifiers make conversation easier, even in somewhat noisy environments.
- Using the phone might take some practice. Holding the phone close to your ear might cause feedback—a whistling or chirping from the hearing amplifier. If this happens, try tilting the phone or moving it away from your ear an inch or two.

- Hearing conversations more clearly can be a game-changer for social gatherings and even one-on-one interactions. The following additional steps can take you even further:
  - Try to face the person you're talking or listening to
  - In noisy environments, try to position yourself so that the source of the noise is behind you
  - Don't shout! Just speak clearly and slowly.
  - In meetings or worship services without amplified sound, sit as close as you can to the sound source.
  - Ask your conversation partner to get your attention before speaking so that you can fully engage with them.

# Cleaning & Care

Keeping your hearing amplifiers clean is crucial to getting the most from them. Wearing a hearing amplifier can increase the amount of wax your ear produces, so it's especially important to perform the following cleaning routine daily.

- **Wipe the surface of the hearing amplifiers** with a wet wipe, soft cloth, or tissue.
- **Brush around each hearing amplifier's microphone** using the provided brush.
- **Clean away any wax buildup in the domes and stems.**



Remove the dome from each hearing amplifier's stem. Use the provided pick to clean the inside of the dome and around the stem. Clean the dome with a soft, moist cloth or mild soap and water. Make sure the dome is completely dry before you put it back on the stem.



With the proper care, your AR hearing amplifiers should provide years of use. It is important to keep the following cautions in mind.

- DO NOT get water on or in the hearing amplifiers.
- DO NOT wear the hearing amplifiers while swimming, showering, in heavy rain, or in a moist atmosphere (like a sauna).
- DO NOT use solvents or liquids on the hearing amplifier earpieces, tubes, or domes.
- DO NOT sleep with the hearing amplifiers on.
- DO NOT leave the hearing amplifiers in or near direct sunlight or excessive heat.
- Remove the hearing amplifiers when applying cosmetics, perfume, aftershave, hairspray, lotion, or any other product that might get into the hearing amplifiers.
- Remove the hearing amplifiers during strenuous physical activities, like working out.
- Keep the hearing amplifiers clean and dry.

# Troubleshooting

**Problem: The hearing amplifiers won't turn on.**

**Solution:** Put the hearing amplifiers in the charging cradle to recharge.

**Problem: The hearing amplifiers don't charge in the charging cradle.**

**Solution:** Make sure the cradle is plugged in. Plug its charging connector into the USB slot on the provided charging cable. Plug the other end of the charging cable into a USB power source, like a computer or adapter.

**Problem: The hearing amplifiers don't produce sound.**

**Solution:** Make sure the hearing amplifiers are charged and turned on. Then rotate the volume control up on each hearing amplifier to increase its volume. If you still don't hear sound, clean the hearing amplifier's dome and microphones using the provided brush/pick.

**Problem: The hearing amplifier whistles when I use it.**

**Solution:** Make sure the dome is seated snugly in your ear. You might need to adjust it to get a better seal—it should fit snugly in your ear so that almost no sound escapes. If you can't get it to fit snugly, you might need to try a different dome size.



©2024 Voxx Accessories Corp.

3502 Woodview Trace, Suite 220 | Indianapolis, IN 46268